



CV. Gravindo Berkati Sukses



🏠 Jl. Angrek 3 no 1c RT 08 RW 02
Kel. Tugu Utara, Kec. Koja
Jakarta utara 14260

☎ 021 - 24623903 🏠 021 - 24623903

✉ gravindoberkatisukses@gmail.com

🌐 www.gravindoberkatisukses.co.id





ABOUT

CV. GRAVINDO BERKATI SUKSES didirikan dengan Akta Notaris No. 15 Tanggal 24 Juli 2019, dihadapan Notaris HERI MARTONO, SH. Berkedudukan di Jl. Kasuari 2 No. 164 Perumnas 1 Bekasi.

Dasar berdirinya perusahaan ini adalah untuk menjalankan usaha-usaha di bidang perdagangan, Ekspor - Impor untuk perusahaan, gas, perminyakan dan perkapalan. CV. GRAVINDO BERKATI SUKSES secara devinitive yaitu sebuah perusahaan yang bergerak di bidang perdagangan (Supplier) dan jasa yang khusus bekerja untuk memenuhi kebutuhan perusahaan, gas, perminyakan dan perkapalan.

Dengan mendekatkan filosofi dasar tersebut di atas yang di sertai kerangka berfikir yang visioner ke depan, maka CV. GRAVINDO BERKATI SUKSES diharapkan dapat menjadi sebuah perusahaan yang kompeten dan terus memperjuangkan visinya sesuai dengan undang - undang dan peraturan - peraturan pemerintah.

Agar peran serta CV. GRAVINDO BERKATI SUKSES lebih terarah sebagai suatu perusahaan di bidang perdagangan dan jasa (Supplier). Maka dalam melakukan usahanya akan selalu melihat visi dan misi yang telah di sepakati bersama untuk terus maju meningkatkan pelayanannya.



VISI

Menjadi sebuah perusahaan yang mendukung pembangunan ekonomi dalam bisnis penyedia / pengadaan barang dan jasa untuk barang-barang yang berhubungan dengan Air, Minyak, Industri, Galangan Kapal, dan Gas.



MISI

- Menyediakan kebutuhan alat-alat teknik Valve, Accesories, Instrument, Equipment, Fitting dan lain-lain.
- Melayani pengadaan suku cadang Valve, Accesories, Instrument, Equipment, Fitting dan perbaikan dibidang air, minyak, gas, industri, dan galangan kapal.
- Melayani pengadaan dan perbaikan segala jenis Valve dan Accesories

SUPPLIER & STOCKIST VALVES

Kami dari Gravindo Berkati Sukses Yang Bergerak Di Supplier Valve Dan Fitting, Bermaksud Untuk Memperkenalkan Perusahaan /Kami .

Adapun Produk Perusahaan Kami Adalah Sebagai Berikut :

PIPE : Seamless, Welded, Stainless steel, Galvanize, HOPE, PVC.

FITTING : Elbow Long Radius/ Short Radius (90°,45°,180°), Tee (Straight Tee, Reducing Tee, Reducer Concentric/Eccentric, Caps, Stud Bolt, Union (HOPE).

FLANGES : Welding Neck Flanges, Blind Flange, Lap joint Flange, Threaded Flange, Slip On Flange, Spectacle Blind Flange.

ACCESORIES : Strainer, Steam Trap, Pressure Gauge, Air Filter Regulator, Pressure Switch, Manifold, Sight Glass, Flow Meter, Flexible Joint, Flexible Hose.

INSTRUMENT : Swagelok, Needle Valve, limit Switch, Solenoid, Pilot Valve, Quick Exhaust, Tubing.

EQUIPMENT : Measure, Measuring, Parts Transmitter, Panels.

VALVES : Shut Down Valve, Control Valve, Gate Valve, Globe Valve, Ball Valve, Check Valve, Butterfly Valve, Safety Valve, Three Way Valve, Forged Steel.

HARDWARE : Plate, UNP, CNP, IWF, H-Beam, Round Bar, Hollow, dll.

PRODUKJASA

REP AIR VALVE : Gate, Globe, Safety (Untuk minyak dan air, Kami memberikan Garansi untuk produk tersebut).

WORK SHOP : Foundry Shop, Machine Shop, Steel Fabrication, Assembly.

CLASS: Jis 5K, IOK, 12K, 16K, 20K, Pn 10, Pn 16, Pn 40, Ansi 150, 300, 600, 800, 900, 1500, 2500, 3000, 5000.

MATERIAL: Bronze, Cast Iron, Ductile Iron, Carbon Steel (A105, A216 Gr.WCB, dll), Stainless Steel (SS316, SS304, F51, CF8M, dll), PE, HOPE.

MERK: Kitz, Toyo, Keystone, Tozen, Git, Crane, Kokai, Shoritzu, Ktm, Wkm, Fisher, Grove, Okm, Omb, Tk, Velan, Argus, Bettis, Mueller, Anderson, Whitey, Swagelok, Parker, Sakai, Sandvik, Unilon, Wavin, Vinilon, Dll.

Untuk kepuasan customer, kami berkomitmen akan memberikan layanan maksimal kepada setiap customer berupa merespon dengan cepat permintaan dan pengiriman barang sampai ke workshop/ project customer dengan tepat waktu dan selalu siap untuk dilakukan inspeksi produk (jika diperlukan) sebelum dikirim dan melengkapi Mill Certificate untuk setiap produk, serta memberikan garansi untuk setiap produk kami.

PIPA CARBON STEEL

Standard : AISI, ASTM, GB, DIN, BS, JIS

Grades: 10# 20# 45 #16Mn ASTM A179, A315B, A335, P11, A335 P22, A335 P5, 12CrMo 15CrMo 20CrMo 42CrMo 12Cr1Mov 10CrMo 910A 355P 22 STF A25, STPG38, STPG38, STS38, STPT42, STB42, STS42, STS49, STPT49



Out Diameter: 6-426mm

Wall Thickness: 1-60mm

Length: 6m,5.8m,11.8m,12m, or as required

Coating: Black coating , oil/varnish ,FBE,2PE,3PE, galvanized etc

PIPA ALLOY STEEL

Standard: ASME SA210, ASME SA213, ASTM SA335, ASTM A335/A335m, ASTM A213/A213m, JISG3467-88, JISG3458-88, GB3087, GB6479-2000

Grades: ASTM : ASTM A213 T2, T12, T11, T22, T9, A199 T9 ; ASTM A335 P2, P12, P11,P22, P5, P9, A199 T11, A200 T5 ;

DIN:13CrMo44, 10CrMo910, 12CrMo195, X12CrMo91;

JIS: STBA20, STBA22, STBA23, STBA2v4, STBA25, STBA26, STPA20, STPA22, STPA23, STPA24, STPA25, STPA26

Outside Diameters: 6-1200mm

Wall Thickness: 1-120mm

Length: 6m,5.8m,11.8m,12m, or as required

Coating: Black coating , oil/varnish ,FBE,2PE,3PE, galvanized etc

Packaging Detail: Packing in bundles or for the client's requirement



PIPA STAINLESS STEEL

Standard: GB, JIS, ASTM, AISI

Grades: (200 series& 300 series& 400 series. etc) 201, 202, 301, 303, 304, 304L, 305, 316, 316L, 316 Ti, 321,410,416,420, 430, 1.4301, 1.4306, 1.4845, 1.4401, 1.4371, 1.4597,1.4541, etc"

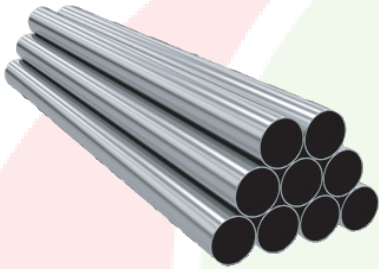
Outside Diameters: Precision Tube: • 4~•76mm;

Extruded Tube: • 60~• 219mm; Hot Rolled: • 48.3~• 720mm

Wall Thickness: Precision Tube: 0.5 ~ 5mm; Extruded Tube: 6 ~ 40mm; Hot Rolled: 3.5 ~ 25mm

Length: SRL ,DRL ,Special length from customer is acceptable.

Coating: Pickling,annealing,Manual polish and Mechanical polish, mirror polish, Bright Annealing, Electrical Polished.



PIPA SSAW

Standard: API 5L, API 5CT, ASTM A252, ASTM 53, EN10217, EN10219, BS, JIS, IS

Certificate: EN10217, EN10219, API 5L PSL1/ PSL2, API 5CT

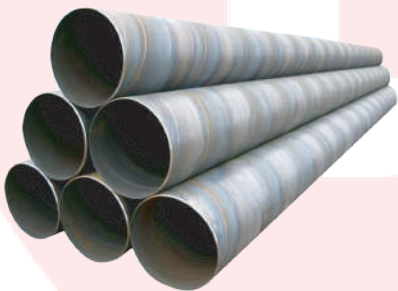
Out Diameter: 219.1 mm - 2540mm (8"-100")

Wall Thickness: 3.2mm - 25.4mm

Length: 6 - 22 m

Steel Grade: API 5L: GR A, GR B, X42,X46, X56, X60,X65,X70, ASTM A252 GR 1, GR 2, GR 3, ASTM A53: GR A, GR B, GR C, GR D, BS 4360: Grade 43, Grade 50

EN:S275, S275JR, S355JRH, S355J2H



PIPA LSAW



Standard: API 5L, API 5CT, ASTM 53, EN10217, DIN 2458. IS 3589, GB/T3091, GB/T9711

Certificate: API 5L PSL1 / PSL2, API 5CT

Out Diameter: 323.9mm - 1820mm(12"-72")

Wall Thickness:5.0 - 50mm

Length:6 - 12m

Steel Grade:

API 5L: GR B, X42, X46, X56, X60, X65, X70

ASTM A53: GR A, GR B, GR C

EN: S275, S275JR, S355JRH, S355J2H

GB: Q195, Q215, Q235, Q345, L175, L210, L245, L320, L360- L555

PIPA ERW



Standard: API 5L, API 5CT, ASTM 53, EN10217, DIN 2458. IS 3589, JIS G3452, BS1387

Certificate: API 5L PSL1/ PSL2, API 5CT

Out Diameter: 21.3mm - 610mm

Wall Thickness:1.8 - 22mm

Length:0.3 - 12m

Steel Grade:API 5L : GR B, X42, X46, X56, X60, X65, X70

ASTM A53: GR A, GR B, GR C

EN: S275, S275JR, S355JRH, S355J2H

GB: Q195, Q215, Q235, Q345, L175, L210, L245, L320, L360- L555

PIPA API 5L



Standard : API 5L

Grades: L210, L245, L245M, L290, L290M, L320, L320M, L360, L360M, L390, L390M, L415, L415M, L450, L450M, L485, L485M

Out Diameter: 6-426mm

Wall Thickness: 1-60mm

Length: 6m,5.8m,11.8m,12m, or as required

Coating: Black coating , oil/varnish ,FBE,2PE,3PE, galvanized etc

PIPA BOILER



Application: Boiler, Super Heater, Heat Exchanger, Ship Builders, Automotive Industry, Power Generation, Food Industry, Paper Industry, Pharmaceutical Industry, Chemical Industry, Oil and Gas Industry

Standard: AISI, ASTM, GB, DIN, BS, JIS

Grades: 10#20#45#16Mn ASTM A179,A315B,A335 P11,A335 P22,A335 P5 ,12CrMo 15CrMo 20CrMo 42CrMo 12Cr1Mov 10CrMo 910A 355P 22 STF A25,STPG38; STPG38; STS38; STPT42; STB42; STS42; STS49; STPT49

Out Diameter: 6-426mm

Wall Thickness: 1-60mm

Length: 6m,5.8m,11.8m,12m, or as required

Coating: Black coating , oil/varnish ,FBE,2PE,3PE, galvanized etc

PIPA MILD STEEL

Baja ringan (MS) pipa diproduksi menggunakan karbon rendah (baja kurang dari 0.25%). Karena kandungan karbon rendah pipa tidak mengeras dan mudah digunakan. Seperti MS Pipes dibuat dari baja ringan mereka dapat dengan mudah dilas dan dibentuk dalam berbagai bentuk dan ukuran untuk pipa dan tujuan tabung. Ini umumnya digunakan untuk minum air supply (pipa, Firefighting, HVAC tetapi juga dapat digunakan di berbagai aplikasi industri dan Teknik Lainnya.



Composition:

1. Low-carbon steel: 0.05 to 0.30% carbon content.
2. Medium-carbon steel: Approximately 0.3–0.8% carbon content.
3. High-carbon steel: Approximately 0.8–2.0% carbon content.
4. Ultra-high-carbon steel: Approximately 3.25–4.0% carbon content.

Shape: Square, Rectangular, Round

Surface Treatment: Polished, Galvanized

AMERICAN STANDARD FLANGE

FLANGE-ANSI B16.5



Standard : ANSI B16.5

Flange Type : WELDING NECK, SLIP ON, BLIND, LAP JOIN, THREADED, SOCKET WELDING

Size : 1/2 " - 24 " or costum

Preassure : 150LB, 300LB, 400LB, 600LB, 900LB, 1500LB, 2500LB

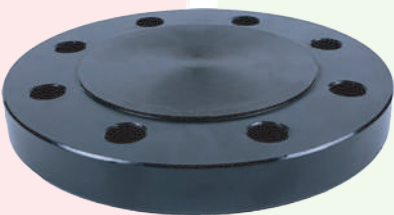
Sealing type: Flat Face(FF), Raised Face (RF), Ring Type Joint (RTJ)

Material :

Carbon Steel : ASTM A105/A105N, A694 F42-F70, A350 LF1/LF2

Stainless Steel : ASTM A182 F304/304L, F316/316L, F321, F51

Alloy Steel : ASTM A182 F11 F12 F22



EUROPEAN STANDARD FLANGE

FLANGE-EN1092-1:2007

Standard : EN1092-1:2007

Flange Type : 01 PLATE, 02 & 04 LOOSE PLATE, 05 BLIND, 11 & 35 WELDING NECK , 12 HUBBED SLIP ON, 13 HUBBED THREADED, 32 PLATE COLLAR, 34 WELD-NECK COLLAR

Size Range : DN15 - DN3000

Preassure : PN6, PN10, PN 16, PN25, PN40, PN63, PN100, PN160,PN250

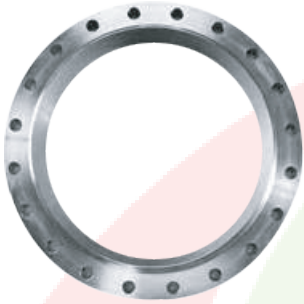
Material :

Carbon Steel P235GH, P245GH, P250GH, P265GH, P280GH

Stainless Steel : ASTM A182 F304/304L, F316/F316L, F321, F51



FLANGE-ASME B16.47 SERIES A (MMS SP44)



Standard : ASME B16.47 SER.A (MSS SP44)

Flange Type : WELDING NECK, BLIND

Size : 12 " - 60 " or costum

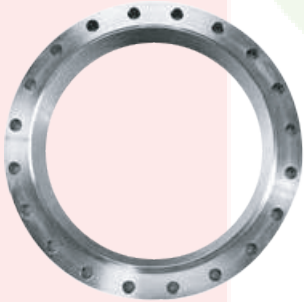
Preasurre : 150LB, 300LB, 400LB, 600LB, 900LB

Material :

Carbon Steel : ASTM A105/A105N, A694 F42-F70, A350 LF1/LF2

Stainless Steel : ASTM A182 F304/304L, F316/316L, F321, F51

FLANGE-ASME B16.47 SERIES B (A- PI605)



Standard : ASME B16.47 SERIES B (API605)

Flange Type : WELDING NECK, BLIND

Size : 26" - 60 " or costum

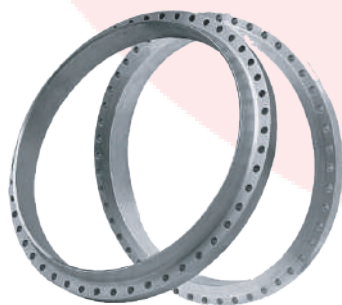
Preasurre Class : 75LB, 150LB, 300LB, 400LB, 600LB, 900LB

Material :

Carbon Steel : ASTM A105/A105N, A694 F42-F70, A350 LF1/LF2

Stainless Steel : VASTM A182 F304/304L, F316/316L, F321

FLANGE-AWWA C207



Standard : AWWA C207

Flange Type : RING FLANGE, BLIND FLANGE, HUB FLANGE

Size : 4 " - 144 " or costum

Preasurre : CLASS B, CLASS D, CLASS E, CLASS F

Material :

Carbon Steel : ASTM A36, A105

Stainless Steel : ASTM A182 F304/304L, F316/316L, F321

GERMAN STANDARD FLANGE

FLANGE-DIN



Standard : DIN

Flange Type : PLATE 2573/2576/2502/2503, BLIND WELDING NECK 2631/2632/2633/2634/2635/2636/2637, LAPPED 2641/2642/2655/2656 THREADED 2565/2566/2567/2568 HUBBED SLIP ON 86029/86030



Size range: DN10-DN3000

Pressure: PN6, PN10, PN16, PN25, PN40, PN64, PN100, PN160

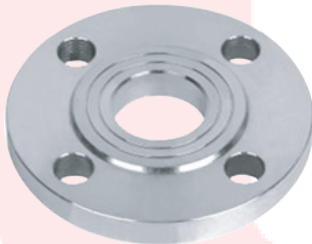
Material:

Carbon steel ST37.2, S235JR, C22.8

Stainless steel ASTM A182 F304/304L; F316/316L, F321, F51

RUSSIAN STANDARD FLANGE

FLANGE-GOST



Standard: GOST Flange type: PLATE 12820-80, WELDING NECK , RING 12822-80, BLIND 12836-67

Size range: DN10 PN2000

Pressure: PN6, PN10, 1 N16, PN25, PN40, PN63,

Material:

Carbon steel C120, CT.3

Stainless steel 12X18H10T, 10X171-113N2T Alloy steel 09T2C, lbX5M



JAPANESE STANDARD FLANGE

FLANGE-JIS B2220



Standard: JIS B2220

Flange type: SOP, SOH, BLIND, WELDIN NECK, SOCKET WELDING,

Size range: 10A-1500A

Pressuer: 1K, 2K, 5K, 10K, 16K, 20K, 30K

Material:

Carbon steel SS400, SF390A, SF440A

Stainless steel SUS F304/F304L, F316/F316L

Alloy steel SFVA FI, SFVA F1A



BRITISH STANDARD FLANGE

FLANGE-BS4504



Standard: BS4504

Flange type: 101 PLATE, 105 BLIND, 111 WELDING NECK, 112 SLIP ON,
113 THREADED

Size range: DN10-DN2000

Pressure: PN6, PN10, PN16, PN25, PN40

Material:

Carbon steel A105, C22.8, ST37.2, S235JR

Stainless steel 304/304L, 316/316L, 321



BRITISH STANDARD FLANGE

FLANGE-BS10



Standard : BS10

Flange Type : PLATE, BLIND, SLIP ON, THREADED

Size Range : DN15 - DN600

Pressure : TABLE D/3/F/H

ITALIAN STANDARD FLANGE

FLANGE- GOST



Standard : UNI

Pressure : PN6, PN10, PN16, PN25, PN40, PN64, PN100

Size : DN10 - DN2000

Design : THREADED, UNI2253-67, 2254-67, 2255-67, BLIND UNI 6091-67, 6092-67, 6093-67, PLATE UNI 2276-67, 2277-67, 2278-67, 6083-67, 6084-67 WELDING NECK UNI 2280-67, 2281-67, 2282-67, 2283-67, 2284-67, LAPPED UNI 6089-67, 6090-67

Material : Carbon Steel A105, C22.8, ST37.2, S235JR, P245GH
Stainless Steel : 304/304L, 321

ELBOW



Dimensions : ASME/ANSI B16.9, ASME B16.28, MSS-SP-43, BS4504, BS4504, BS1560, BS10 ASME 16.11, MSS SP-79, 83, 95, 97, BS 3799

Size : Seamless Elbow (1/2" - 24"), ERW / Welded / Fabricated Elbow (1/2" - 48")

Thickness : Schedule 5S, 10S, 20S, S10, S20, S30, STD, 40S, S40, S60, XS, 80S, S80, S100, S120, S140, S160, XXS and etc.

Manufacturer of : Elbow, 90 Deg Elbow, Long Radius Elbow, Short Radius Elbow, LR Elbow, SR Elbow.

Type : **45°, 90°, 180°**

Material :

Stainless Steel :

ASTM A403 WP316/316L, ASTM A403 SA / A 774 WP-S, WP-W, WP-WX 304/304L, ASTM A182 F316L, 304L, DIN 1.4301, DIN1.4306, DIN 1.4401, DIN 1.4404

Carbon Steel :

ASTM A234, ASME SA234 WPB , WPBW, WPHY 42, WPHY 46, WPHY 52, WPH 60, WPHY 65 & WPHY 70.

Copper Alloy Steel :

ASTM B122, B171, B466, B467, ASTM SB 61 , SB62 , SB151 , SB152 UNS No. C70600 (Cu-Ni 90/10), C 71500 (Cu-Ni 70/30), UNS No. C 10100, 10200, 10300, 10800, 12000, 12200

Duplex & Super Duplex Steel :

ASTM A815, ASME SA 815 UNS NO S31803, S32205. UNS S32750, S32950. Werkstoff No. 1.4462

Low Temperature Carbon Steel :

ASTM A420 WPL3, A420 WPL6
ASTM / ASME A/SA 234 Gr. WP 1, WP 5, WP 9, WP 11, WP 12, WP 22, WP 91

Nickel Alloy Buttweld :

ASTM SB564, SB160, SB472, SB162 Nickel 200 (UNS No. N02200), Nickel 201 (UNS No. N02201), Monel 400 (UNS No. N04400), Monel 500 (UNS No. N05500), Inconel 800 (UNS No. N08800), Inconel 825 (UNS No. N08825), Inconel 600 (UNS No. N06600), Inconel 625 (UNS No. N06625), Inconel 601 (UNS No. N06601), Hastelloy C 276 (UNS No. N10276), Alloy 20 (UNS No. N08020), Titanium (Grade 2 & 5)

EQUAL & CROSS TEE



Dimensions : ASME/ANSI B16.9, ASME B16.28, MSS-SP-43, BS4504, BS4504, BS1560, BS10 ASME 16.11, MSS SP-79, 83, 95, 97, BS 3799

Size : Seamless Elbow (1/2"~24"), ERW / Welded / Fabricated Elbow (1/2"~48")

Thickness : Schedule 5S, 10S, 20S, S10, S20, S30, STD, 40S, S40, S60, XS, 80S, S80, S100, S120, S140, S160, XXS and etc.

Manufacturer of :

Equal : Equal Tee, Unequal Tee, Reducing Tee, Pipe Tee, Butt weld Tee.

Cross : Equal Cross, Unequal Cross, Reducing Cross, Pipe Cross, Butt weld Cross.

Material :

STAINLESS STEEL :

ASTM A403 WP316/316L, ASTM A403 SA / A 774 WP-S, WP-W, WP-WX 304/304L, ASTM A182 F316L, 304L, DIN 1.4301, DIN.1.4306, DIN 1.4401, DIN 1.4404

DUPLEX & SUPER DUPLEX STEEL :

ASTM A815, ASME SA 815 UNS NO S31803, S32205. UNS S32750, S32950. WERKSTOFF NO. 1.4462

CARBON STEEL EQUAL :

ASTM A234, ASME SA234 WPB , WPBW, WPHY 42, WPHY 46, WPHY 52, WPH 60, WPHY 65 & WPHY 70.

LOW TEMPERATURE CARBON STEEL : ASTM A420 WPL3, A420 WPL6

ALLOY STEEL REDUCING / UNEQUAL :

ASTM / ASME A/SA 234 GR. WP 1, WP 5, WP 9, WP 11, WP 12, WP 22, WP 91

COPPER ALLOY STEEL :

ASTM B122, B171, B466, B467, ASTM SB 61 , SB62 , SB151 , SB152 UNS NO. C70600 (CU-NI 90/10), C 71500 (CU-NI 70/30), UNS NO. C 10100, 10200, 10300, 10800, 12000, 12200

NICKEL ALLOY BUTTWELD :

ASTM SB564, SB160, SB472, SB162 NICKEL 200 (UNS NO. N02200), NICKEL 201 (UNS NO. N02201), MONEL 400 (UNS NO. N04400), MONEL 500 (UNS NO. N05500), INCONEL 800 (UNS NO. N08800), INCONEL 825 (UNS NO. N08825), INCONEL 600 (UNS NO. N06600), INCONEL 625 (UNS NO. N06625), INCONEL 601 (UNS NO. N06601), HASTELLOY C 276 (UNS NO. N10276), ALLOY 20 (UNS NO. N08020), TITANIUM (GRADE 2 & 5)

CONCENTRIC & ECCENTRIC REDUCER



Dimensions : ASME B16.28, ASME/ANSI B16.9, MSS-SP-43

Size : 1/2"NB TO 48"NB IN

Thickness : Schedule 5S, 10S, 20S, S10, S20, S30, STD, 40S, S40, S60, XS, 80S, S80, S100, S120, S140, S160, XXS and etc.

Type : Seamless / ERW / Welded / Fabricated

Manufacturer of : Pipe Reducer, Fitting Concentric Reducers, Concentric Reducer, Pipe Concentric Reducers, Fitting Eccentric Reducers, Eccentric Reducer, Pipe Eccentric Reducers.

Material :

STAINLESS STEEL :

ASTM A403 WP316/316L, ASTM A403 SA / A 774 WP-S, WP-W, WP-WX 304/304L, ASTM A182 F316L, 304L, DIN 1.4301, DIN1.4306, DIN 1.4401, DIN 1.4404

DUPLEX & SUPER DUPLEX STEEL :

ASTM A815, ASME SA 815 UNS NO S31803, S32205. UNS S32750, S32950. WERKSTOFF NO. 1.4462

CARBON STEEL ECCENTRIC REDUCER :

ASTM A234, ASME SA234 WPB , WPBW, WPHY 42, WPHY 46, WPHY 52, WPH 60, WPHY 65 & WPHY 70.

LOW TEMPERATURE CARBON STEEL ECCENTRIC REDUCER : ASTM A420 WPL3, A420 WPL6

ALLOY STEEL ECCENTRIC REDUCER :

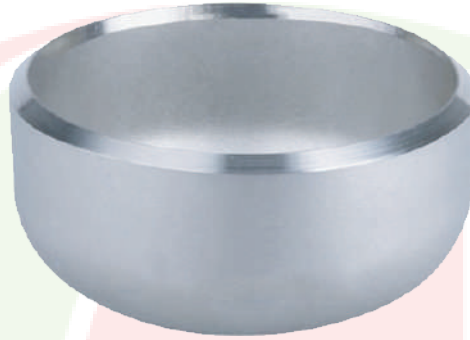
ASTM / ASME A/SA 234 GR. WP 1, WP 5, WP 9, WP 11, WP 12, WP 22, WP 91

COPPER ALLOY STEEL : ASTM B122, B171, B466, B467, ASTM SB 61 , SB62 , SB151 , SB152 UNS NO. C70600 (CU-NI 90/10), C 71500 (CU-NI 70/30), UNS NO. C 10100, 10200, 10300, 10800, 12000, 12200

NICKEL ALLOY BUTTWELD :

ASTM SB564, SB160, SB472, SB162 NICKEL 200 (UNS NO. N02200), NICKEL 201 (UNS NO. N02201), MONEL 400 (UNS NO. N04400), MONEL 500 (UNS NO. N05500), INCONEL 800 (UNS NO. N08800), INCONEL 825 (UNS NO. N08825), INCONEL 600 (UNS NO. N06600), INCONEL 625 (UNS NO. N06625), INCONEL 601 (UNS NO. N06601), HASTELLOY C 276 (UNS NO. N10276), ALLOY 20 (UNS NO. N08020), TITANIUM (GRADE 2 & 5)

PIPE CAP



Dimensions : ASME B16.28, ASME/ANSI B16.9, MSS-SP-43

Size : 1/2" (15 NB) to 48" (1200NB)

Thickness : Schedule 5S, 10S, 20S, S10, S20, S30, STD, 40S, S40, S60, XS, 80S, S80, S100, S120, S140, S160, XXS and etc.

Type : Seamless / ERW / Welded / Fabricated

Manufacturer of : Pipe Caps, End Caps, Pipe End Caps

Material :

Stainless Steel Pipe Cap :

ASTM A403 WP316/316L, ASTM A403 SA / A 774 WP-S, WP-W, WP-WX 304/304L, ASTM A182 F316L, 304L, DIN 1.4301, DIN1.4306, DIN 1.4401, DIN 1.4404

Carbon Steel Pipe Cap :

ASTM A234, ASME SA234 WPB , WPBW, WPHY 42, WPHY 46, WPHY 52, WPH 60, WPHY 65 & WPHY 70.

Low Temperature Carbon Steel Pipe Cap :

ASTM A420 WPL3, A420 WPL6

Alloy Steel Pipe Cap :

ASTM / ASME A/SA 234 Gr. WP 1, WP 5, WP 9, WP 11, WP 12, WP 22, WP 91

Duplex & Super Duplex Steel Pipe Cap :

ASTM A815, ASME SA 815 UNS NO S31803, S32205. UNS S32750, S32950. Werkstoff No. 1.4462

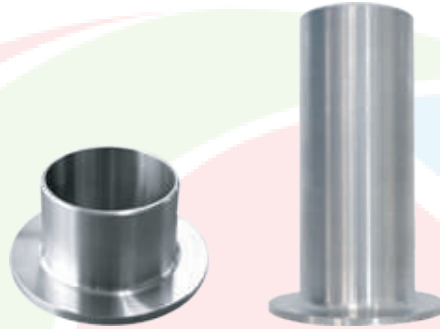
Copper Alloy Steel Pipe Cap :

ASTM B122, B171, B466, B467, ASTM SB 61 , SB62 , SB151 , SB152 UNS No. C70600 (Cu-Ni 90/10), C 71500 (Cu-Ni 70/30), UNS No. C 10100, 10200, 10300, 10800, 12000, 12200

Nickel Alloy Buttweld Pipe Cap :

ASTM SB564, SB160, SB472, SB162 Nickel 200 (UNS No. N02200), Nickel 201 (UNS No. N02201), Monel 400 (UNS No. N04400), Monel 500 (UNS No. N05500), Inconel 800 (UNS No. N08800), Inconel 825 (UNS No. N08825), Inconel 600 (UNS No. N06600), Inconel 625 (UNS No. N06625), Inconel 601 (UNS No. N06601), Hastelloy C 276 (UNS No. N10276), Alloy 20 (UNS No. N08020), Titanium (Grade 2 & 5)

SHORT & LONG STUB END



Dimensions : ASME B16.28, ASME/ANSI B16.9, MSS-SP-43

Size : 1/2"NB TO 36 "NB IN

Thickness : Schedule 5S, 10S, 20S, S10, S20, S30, STD, 40S, S40, S60, XS, 80S, S80, S100, S120, S140, S160, XXS and etc.

Type : Seamless / ERW / Welded / Fabricated

Manufacturer of : Long Stub Ends, Short Stub End, Buttweld Short Stub Ends, Pipe Stub Ends, Butt weld Long Stub Ends.

Material :

Stainless Steel :

ASTM A403 WP316/316L, ASTM A403 SA / A 774 WP-S, WP-W, WP-WX 304/304L, ASTM A182 F316L, 304L, DIN 1.4301, DIN1.4306, DIN 1.4401, DIN 1.4404

Carbon Steel :

ASTM A234, ASME SA234 WPB , WPBW, WPHY 42, WPHY 46, WPHY 52, WPH 60, WPHY 65 & WPHY 70.

Low Temperature Carbon Steel :

ASTM A420 WPL3, A420 WPL6

Alloy Steel Stub End :

ASTM / ASME A/SA 234 Gr. WP 1, WP 5, WP 9, WP 11, WP 12, WP 22, WP 91

Duplex & Super Duplex Steel :

ASTM A815, ASME SA 815 UNS NO S31803, S32205. UNS S32750, S32950. Werkstoff No. 1.4462

Copper Alloy Steel :

ASTM B122, B171, B466, B467, ASTM SB 61 , SB62 , SB151 , SB152 UNS No. C70600 (Cu-Ni 90/10), C 71500 (Cu-Ni 70/30), UNS No. C 10100, 10200, 10300, 10800, 12000, 12200

Nickel Alloy Buttweld :

ASTM SB564, SB160, SB472, SB162 Nickel 200 (UNS No. N02200), Nickel 201 (UNS No. N02201), Monel 400 (UNS No. N04400), Monel 500 (UNS No. N05500), Inconel 800 (UNS No. N08800), Inconel 825 (UNS No. N08825), Inconel 600 (UNS No. N06600), Inconel 625 (UNS No. N06625), Inconel 601 (UNS No. N06601), Hastelloy C 276 (UNS No. N10276), Alloy 20 (UNS No. N08020), Titanium (Grade 2 & 5)

PIPE NIPPLE



Dimensions : ASME B16.28, ASME/ANSI B16.9, MSS-SP-43

Size : 1/2" (15 NB) to 48" (1200NB)

Thickness : Schedule 5S, 10S, 20S, S10, S20, S30, STD, 40S, S40, S60, XS, 80S, S80, S100, S120, S140, S160, XXS and etc.

Type : Seamless / ERW / Welded / Fabricated

Material :

Stainless Steel :

ASTM A403 WP316/316L, ASTM A403 SA / A 774 WP-S, WP-W, WP-WX 304/304L, ASTM A182 F316L, 304L, DIN 1.4301, DIN1.4306, DIN 1.4401, DIN 1.4404

Duplex & Super Duplex Steel :

ASTM A815, ASME SA 815 UNS NO S31803, S32205. UNS S32750, S32950. Werkstoff No. 1.4462

Carbon Steel Pipe Nipple :

ASTM A234, ASME SA234 WPB , WPBW, WPHY 42, WPHY 46, WPHY 52, WPH 60, WPHY 65 & WPHY 70.

Low Temperature Carbon Steel :

ASTM A420 WPL3, A420 WPL6

Alloy Steel Pipe :

ASTM / ASME A/SA 234 Gr. WP 1, WP 5, WP 9, WP 11, WP 12, WP 22, WP 91

Copper Alloy Steel Pipe :

ASTM B122, B171, B466, B467, ASTM SB 61 , SB62 , SB151 , SB152 UNS No. C70600 (Cu-Ni 90/10), C 71500 (Cu-Ni 70/30), UNS No. C 10100, 10200, 10300, 10800, 12000, 12200

Nickel Alloy Buttweld Pipe Nipple :

ASTM SB564, SB160, SB472, SB162 Nickel 200 (UNS No. N02200), Nickel 201 (UNS No. N02201), Monel 400 (UNS No. N04400), Monel 500 (UNS No. N05500), Inconel 800 (UNS No. N08800), Inconel 825 (UNS No. N08825), Inconel 600 (UNS No. N06600), Inconel 625 (UNS No. N06625), Inconel 601 (UNS No. N06601), Hastelloy C 276 (UNS No. N10276), Alloy 20 (UNS No. N08020), Titanium (Grade 2 & 5)

LONG RADIUS BEND



Dimensions : ASME B16.28, ASME/ANSI B16.9, MSS-SP-43

Size : 1/2" (15 NB) to 48" (1200NB)

Thickness : Schedule 5S, 10S, 20S, S10, S20, S30, STD, 40S, S40, S60, XS, 80S, S80, S100, S120, S140, S160, XXS and etc.

Type : Seamless / ERW / Welded / Fabricated

Material :

Stainless Steel :

ASTM A403 WP316/316L, ASTM A403 SA / A 774 WP-S, WP-W, WP-WX 304/304L, ASTM A182 F316L, 304L, DIN 1.4301, DIN1.4306, DIN 1.4401, DIN 1.4404

Duplex & Super Duplex Steel :

ASTM A815, ASME SA 815 UNS NO S31803, S32205. UNS S32750, S32950. Werkstoff No. 1.4462

Carbon Steel :

ASTM A234, ASME SA234 WPB , WPBW, WPHY 42, WPHY 46, WPHY 52, WPH 60, WPHY 65 & WPHY 70.

Low Temperature Carbon Steel :

ASTM A420 WPL3, A420 WPL6

Nickel Alloy Buttweld :

ASTM SB564, SB160, SB472, SB162 Nickel 200 (UNS No. N02200), Nickel 201 (UNS No. N02201), Monel 400 (UNS No. N04400), Monel 500 (UNS No. N05500), Inconel 800 (UNS No. N08800), Inconel 825 (UNS No. N08825), Inconel 600 (UNS No. N06600), Inconel 625 (UNS No. N06625), Inconel 601 (UNS No. N06601), Hastelloy C 276 (UNS No. N10276), Alloy 20 (UNS No. N08020), Titanium (Grade 2 & 5)

Alloy Steel :

ASTM / ASME A/SA 234 Gr. WP 1, WP 5, WP 9, WP 11, WP 12, WP 22, WP 91

Copper Alloy Steel :

ASTM B122, B171, B466, B467, ASTM SB

PIGGABLE BEND



Dimensions : ASME B16.28, ASME/ANSI B16.9, MSS-SP-43

Size : 1/2" (15 NB) to 48" (1200NB)

Thickness : Schedule 5S, 10S, 20S, S10, S20, S30, STD, 40S, S40, S60, XS, 80S, S80, S100, S120, S140, S160, XXS and etc.

Type : Seamless / ERW / Welded / Fabricated

Material :

Stainless Steel :

ASTM A403 WP316/316L, ASTM A403 SA / A 774
WP-S, WP-W, WP-WX 304/304L, ASTM A182 F316L,
304L, DIN 1.4301, DIN1.4306, DIN 1.4401, DIN 1.4404

Duplex & Super Duplex Steel :

ASTM A815, ASME SA 815 UNS NO S31803, S32205.
UNS S32750, S32950. Werkstoff No. 1.4462

Carbon Steel Long :

ASTM A234, ASME SA234 WPB , WPBW, WPHY 42,
WPHY 46, WPHY 52, WPH 60, WPHY 65 & WPHY 70.

Low Temperature Carbon Steel : ASTM A420 WPL3,
A420 WPL6

Nickel Alloy Buttweld :

ASTM SB564, SB160, SB472, SB162 Nickel 200
(UNS No. N02200), Nickel 201 (UNS No. N02201),
Monel 400 (UNS No. N04400), Monel 500 (UNS No.
N05500), Inconel 800 (UNS No. N08800), Inconel
825 (UNS No. N08825), Inconel 600 (UNS No.
N06600), Inconel 625 (UNS No. N06625), Inconel
601 (UNS No. N06601), Hastelloy C 276 (UNS No.
N10276), Alloy 20 (UNS No. N08020), Titanium
(Grade 2 & 5)

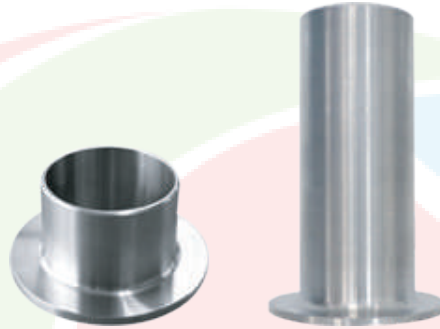
Alloy Steel :

ASTM / ASME A/SA 234 Gr. WP 1, WP 5, WP 9, WP
11, WP 12, WP 22, WP 91

Copper Alloy Steel :

ASTM B122, B171, B466, B467, ASTM SB

SHORT & LONG STUB END



Dimensions : ASME B16.28, ASME/ANSI B16.9, MSS-SP-43

Size : 1/2"NB TO 36 "NB IN

Thickness : Schedule 5S, 10S, 20S, S10, S20, S30, STD, 40S, S40, S60, XS, 80S, S80, S100, S120, S140, S160, XXS and etc.

Type : Seamless / ERW / Welded / Fabricated

Manufacturer of : Long Stub Ends, Short Stub End, Buttweld Short Stub Ends, Pipe Stub Ends, Butt weld Long Stub Ends.

Material :

Stainless Steel :

ASTM A403 WP316/316L, ASTM A403 SA / A 774 WP-S, WP-W, WP-WX 304/304L, ASTM A182 F316L, 304L, DIN 1.4301, DIN1.4306, DIN 1.4401, DIN 1.4404

Carbon Steel :

ASTM A234, ASME SA234 WPB , WPBW, WPHY 42, WPHY 46, WPHY 52, WPH 60, WPHY 65 & WPHY 70.

Low Temperature Carbon Steel :

ASTM A420 WPL3, A420 WPL6

Alloy Steel Stub End :

ASTM / ASME A/SA 234 Gr. WP 1, WP 5, WP 9, WP 11, WP 12, WP 22, WP 91

Duplex & Super Duplex Steel :

ASTM A815, ASME SA 815 UNS NO S31803, S32205. UNS S32750, S32950. Werkstoff No. 1.4462

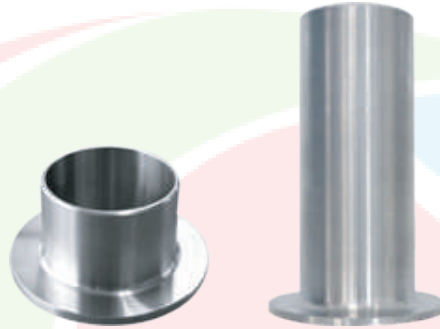
Copper Alloy Steel :

ASTM B122, B171, B466, B467, ASTM SB 61 , SB62 , SB151 , SB152 UNS No. C70600 (Cu-Ni 90/10), C 71500 (Cu-Ni 70/30), UNS No. C 10100, 10200, 10300, 10800, 12000, 12200

Nickel Alloy Buttweld :

ASTM SB564, SB160, SB472, SB162 Nickel 200 (UNS No. N02200), Nickel 201 (UNS No. N02201), Monel 400 (UNS No. N04400), Monel 500 (UNS No. N05500), Inconel 800 (UNS No. N08800), Inconel 825 (UNS No. N08825), Inconel 600 (UNS No. N06600), Inconel 625 (UNS No. N06625), Inconel 601 (UNS No. N06601), Hastelloy C 276 (UNS No. N10276), Alloy 20 (UNS No. N08020), Titanium (Grade 2 & 5)

SHORT & LONG STUB END



Dimensions : ASME B16.28, ASME/ANSI B16.9, MSS-SP-43

Size : 1/2"NB TO 36 "NB IN

Thickness : Schedule 5S, 10S, 20S, S10, S20, S30, STD, 40S, S40, S60, XS, 80S, S80, S100, S120, S140, S160, XXS and etc.

Type : Seamless / ERW / Welded / Fabricated

Manufacturer of : Long Stub Ends, Short Stub End, Buttweld Short Stub Ends, Pipe Stub Ends, Butt weld Long Stub Ends.

Material :

Stainless Steel :

ASTM A403 WP316/316L, ASTM A403 SA / A 774 WP-S, WP-W, WP-WX 304/304L, ASTM A182 F316L, 304L, DIN 1.4301, DIN1.4306, DIN 1.4401, DIN 1.4404

Carbon Steel :

ASTM A234, ASME SA234 WPB , WPBW, WPHY 42, WPHY 46, WPHY 52, WPH 60, WPHY 65 & WPHY 70.

Low Temperature Carbon Steel :

ASTM A420 WPL3, A420 WPL6

Alloy Steel Stub End :

ASTM / ASME A/SA 234 Gr. WP 1, WP 5, WP 9, WP 11, WP 12, WP 22, WP 91

Duplex & Super Duplex Steel :

ASTM A815, ASME SA 815 UNS NO S31803, S32205. UNS S32750, S32950. Werkstoff No. 1.4462

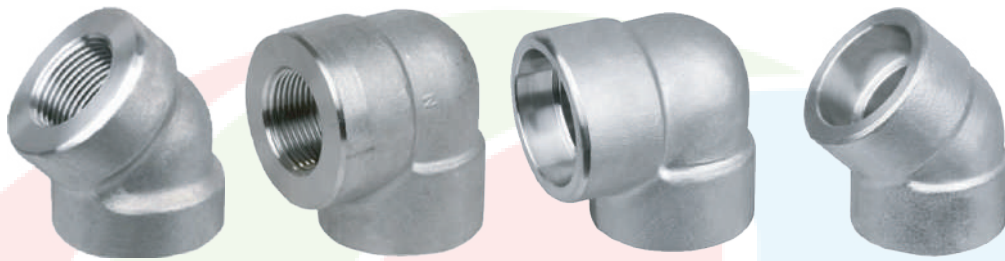
Copper Alloy Steel :

ASTM B122, B171, B466, B467, ASTM SB 61 , SB62 , SB151 , SB152 UNS No. C70600 (Cu-Ni 90/10), C 71500 (Cu-Ni 70/30), UNS No. C 10100, 10200, 10300, 10800, 12000, 12200

Nickel Alloy Buttweld :

ASTM SB564, SB160, SB472, SB162 Nickel 200 (UNS No. N02200), Nickel 201 (UNS No. N02201), Monel 400 (UNS No. N04400), Monel 500 (UNS No. N05500), Inconel 800 (UNS No. N08800), Inconel 825 (UNS No. N08825), Inconel 600 (UNS No. N06600), Inconel 625 (UNS No. N06625), Inconel 601 (UNS No. N06601), Hastelloy C 276 (UNS No. N10276), Alloy 20 (UNS No. N08020), Titanium (Grade 2 & 5)

ELBOW



Dimensions : ASME B16.11, MSS SP-79, MSS SP-95, 83, 95, 97, BS 3799

Size : 1/8" NB to 4" NB

Connection : Threaded, Socket Weld

Thickness : Schedule 5S, 10S, 20S, S10, S20, S30, STD, 40S, S40, S60, XS, 80S, S80, S100, S120, S140, S160, XXS and etc.

Pressure Clas : 3000 LBS, 6000 LBS, 9000 LBS

Manufacturer of : Forged Elbow, Socket Weld and Threaded 45, 90 Deg Elbow, Socket Weld and Threaded Long Radius Elbow, Socket Weld and Threaded Short Radius Elbow, Socket Weld and Threaded LR Elbow, Socket Weld and Threaded SR Elbow.

Material :

Stainless Steel :

ASTM A182 F304, F304L, F306, F316L, F304H, F309S, F309H, F310S, F310H, F316TI, F316H, F316LN, F317, F317L, F321, F321H, F11, F22, F91, F347, F347H, F904L, ASTM A312/A403 TP304, TP304L, TP316, TP316L

Duplex & Super Duplex Steel :

ASTM A182 – F51, F53, F55 S31803, S32205, S32550, S32750, S32760, S32950.

Carbon Steel :

ASTM/ ASME A 105, ASTM/ ASME A 350 LF 2, ASTM / ASME A 53 GR. A & B, ASTM A 106 GR. A, B & C. API 5L GR. B, API 5L X 42, X 46, X 52, X 60, X 65 & X 70. ASTM / ASME A 691 GR A, B & C

Alloy Steel :

ASTM / ASME A 182, ASTM / ASME A 335, ASTM / ASME A 234 GR P 1, P 5, P 9, P 11, P 12, P 22, P 23, P 91, ASTM / ASME A 691 GR 1 CR, 1 1/4 CR, 2 1/4 CR, 5 CR, 9CR, 91

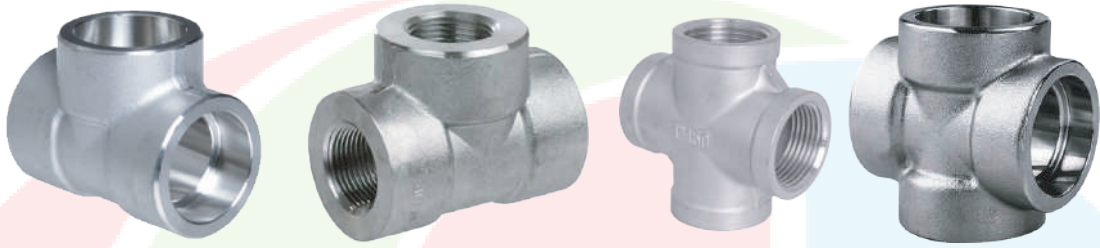
Copper Alloy Steel :

ASTM / ASME SB 111 UNS NO. C 10100 , C 10200 , C 10300 , C 10800 , C 12000, C 12200, C 70600 C 71500, ASTM / ASME SB 466 UNS NO. C 70600 (CU -NI- 90/10) , C 71500 (CU -NI- 70/30)

Nickel Alloy :

ASTM SB564, SB564, Nickel 200 (UNS No. N02200), Nickel 201 (UNS No. N02201), Monel 400 (UNS No. N04400), Monel 500 (UNS No. N05500), Inconel 800 (UNS No. N08800), Inconel 825 (UNS No. N08825), Inconel 600 (UNS No. N06600), Inconel 625 (UNS No. N06625), Inconel 601 (UNS No. N06601), Hastelloy C 276 (UNS No. N10276), Alloy 20 (UNS No. N08020), Titanium (Grade 2 & 5)

EQUAL & CROSS TEE



Dimensions : ASME B16.11, MSS SP-79, MSS SP-95, 83, 95, 97, BS 3799

Size : 1/8" NB to 4" NB

Connection : Socket Weld, Threaded

Thickness : Schedule 5S, 10S, 20S, S10, S20, S30, STD, 40S, S40, S60, XS, 80S, S80, S100, S120, S140, S160, XXS and etc.

Pressure Clas : 3000 LBS, 6000 LBS, 9000 LBS

Manufacturer of : Forged Tee, Socket Weld and Threaded Tee, Socket Weld and Threaded Reducing Tee, Socket Weld and Threaded Equal Tee and Cross tee, Socket Weld and Threaded Unequal Tee.

Material :

Stainless Steel :

ASTM A182 F304, F304L, F306, F316L, F304H, F309S, F309H, F310S, F310H, F316TI, F316H, F316LN, F317, F317L, F321, F321H, F11, F22, F91, F347, F347H, F904L, ASTM A312/A403 TP304, TP304L, TP316, TP316L

Duplex & Super Duplex Steel :

ASTM A182 – F51, F53, F55 S31803, S32205, S32550, S32750, S32760, S32950.

Carbon Steel :

ASTM/ ASME A 105, ASTM/ ASME A 350 LF 2, ASTM / ASME A 53 GR. A & B, ASTM A 106 GR. A, B & C. API 5L GR. B, API 5L X 42, X 46, X 52, X 60, X 65 & X 70. ASTM / AASME A 691 GR A, B & C

Alloy Steel :

ASTM / ASME A 182, ASTM / ASME A 335, ASTM / ASME A 234 GR P 1, P 5, P 9, P 11, P 12, P 22, P 23, P 91, ASTM / ASME A 691 GR 1 CR, 1 1/4 CR, 2 1/4 CR, 5 CR, 9CR, 91

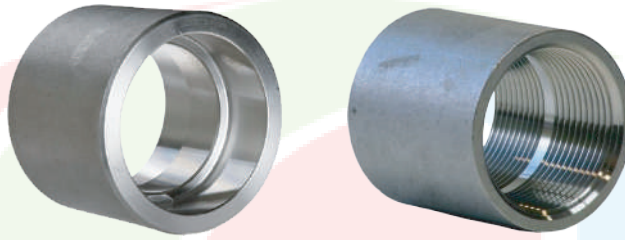
Copper Alloy Steel :

ASTM / ASME SB 111 UNS NO. C 10100 , C 10200 , C 10300 , C 10800 , C 12000, C 12200, C 70600 C 71500, ASTM / ASME SB 466 UNS NO. C 70600 (CU -NI- 90/10) , C 71500 (CU -NI- 70/30)

Nickel Alloy :

ASTM SB564, SB564, Nickel 200 (UNS No. N02200), Nickel 201 (UNS No. N02201), Monel 400 (UNS No. N04400), Monel 500 (UNS No. N05500), Inconel 800 (UNS No. N08800), Inconel 825 (UNS No. N08825), Inconel 600 (UNS No. N06600), Inconel 625 (UNS No. N06625), Inconel 601 (UNS No. N06601), Hastelloy C 276 (UNS No. N10276), Alloy 20 (UNS No. N08020), Titanium (Grade 2 & 5)

COUPLING



Dimensions : ASME B16.11, MSS SP-79, MSS SP-95, 83, 95, 97, BS 3799

Size : 1/8" NB to 4" NB

Thickness : Schedule 5S, 10S, 20S, S10, S20, S30, STD, 40S, S40, S60, XS, 80S, S80, S100, S120, S140, S160, XXS and etc.

Connection : Socket Weld, Threaded

Pressure Clas : 3000 LBS, 6000 LBS, 9000 LBS

Manufacturer of : Forged Coupling, Socket Weld Full Coupling, Socket Weld and Threaded Half Coupling, Socket Weld and Threaded Pipe Coupling.

Material :

Stainless Steel :

ASTM A182 F304, F304L, F306, F316L, F304H, F309S, F309H, F310S, F310H, F316TI, F316H, F316LN, F317, F317L, F321, F321H, F11, F22, F91, F347, F347H, F904L, ASTM A312/A403 TP304, TP304L, TP316, TP316L

Duplex & Super Duplex Steel :

ASTM A182 – F51, F53, F55 S31803, S32205, S32550, S32750, S32760, S32950.

Carbon Steel :

ASTM/ ASME A 105, ASTM/ ASME A 350 LF 2, ASTM / ASME A 53 GR. A & B, ASTM A 106 GR. A, B & C. API 5L GR. B, API 5L X 42, X 46, X 52, X 60, X 65 & X 70. ASTM / ASME A 691 GR A, B & C

Alloy Steel :

ASTM / ASME A 182, ASTM / ASME A 335, ASTM / ASME A 234 GR P 1, P 5, P 9, P 11, P 12, P 22, P 23, P 91, ASTM / ASME A 691 GR 1 CR, 1 1/4 CR, 2 1/4 CR, 5 CR, 9CR, 91

Copper Alloy Steel :

ASTM / ASME SB 111 UNS NO. C 10100 , C 10200 , C 10300 , C 10800 , C 12000, C 12200, C 70600 C 71500, ASTM / ASME SB 466 UNS NO. C 70600 (CU -NI- 90/10) , C 71500 (CU -NI- 70/30)

Nickel Alloy :

ASTM SB564, SB564, Nickel 200 (UNS No. N02200), Nickel 201 (UNS No. N02201), Monel 400 (UNS No. N04400), Monel 500 (UNS No. N05500), Inconel 800 (UNS No. N08800), Inconel 825 (UNS No. N08825), Inconel 600 (UNS No. N06600), Inconel 625 (UNS No. N06625), Inconel 601 (UNS No. N06601), Hastelloy C 276 (UNS No. N10276), Alloy 20 (UNS No. N08020), Titanium (Grade 2 & 5)



Dimensions : ASME B16.11, MSS SP-79, MSS SP-95, 83, 95, 97, BS 3799

Size : 1/8" NB to 4" NB

Connection : Socket Weld , Threaded

Thickness : Schedule 5S, 10S, 20S, S10, S20, S30, STD, 40S, S40, S60, XS, 80S, S80, S100, S120, S140, S160, XXS and etc.

Pressure Clas : 3000 LBS, 6000 LBS, 9000 LBS

Manufacturer of : End Pipe Caps, Cap, Pipe Caps.

Material :

Stainless Steel :

ASTM A182 F304, F304L, F306, F316L, F304H, F309S, F309H, F310S, F310H, F316TI, F316H, F316LN, F317, F317L, F321, F321H, F11, F22, F91, F347, F347H, F904L, ASTM A312/A403 TP304, TP304L, TP316, TP316L

Duplex & Super Duplex Steel :

ASTM A182 – F51, F53, F55 S31803, S32205, S32550, S32750, S32760, S32950.

Carbon Steel Socket :

ASTM/ ASME A 105, ASTM/ ASME A 350 LF 2, ASTM / ASME A 53 GR. A & B, ASTM A 106 GR. A, B & C. API 5L GR. B, API 5L X 42, X 46, X 52, X 60, X 65 & X 70. ASTM / ASME A 691 GR A, B & C

Alloy Steel Socket :

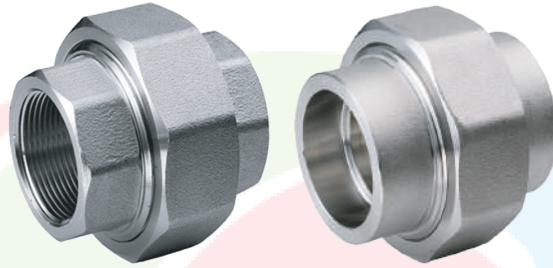
ASTM / ASME A 182, ASTM / ASME A 335, ASTM / ASME A 234 GR P 1, P 5, P 9, P 11, P 12, P 22, P 23, P 91, ASTM / ASME A 691 GR 1 CR, 1 1/4 CR, 2 1/4 CR, 5 CR, 9CR, 91

Copper Alloy Steel :

ASTM / ASME SB 111 UNS NO. C 10100 , C 10200 , C 10300 , C 10800 , C 12000, C 12200, C 70600 C 71500, ASTM / ASME SB 466 UNS NO. C 70600 (CU -NI- 90/10) , C 71500 (CU -NI- 70/30)

Nickel Alloy :

ASTM SB564, SB564, Nickel 200 (UNS No. N02200), Nickel 201 (UNS No. N02201), Monel 400 (UNS No. N04400), Monel 500 (UNS No. N05500), Inconel 800 (UNS No. N08800), Inconel 825 (UNS No. N08825), Inconel 600 (UNS No. N06600), Inconel 625 (UNS No. N06625), Inconel 601 (UNS No. N06601), Hastelloy C 276 (UNS No. N10276), Alloy 20 (UNS No. N08020), Titanium (Grade 2 & 5)



Dimensions : ASME B16.11, MSS SP-79, MSS SP-95, 83, 95, 97, BS 3799

Size : 1/8" NB to 4" NB

Connection : Socket Weld, Threaded

Thickness : Schedule 5S, 10S, 20S, S10, S20, S30, STD, 40S, S40, S60, XS, 80S, S80, S100, S120, S140, S160, XXS and etc.

Pressure Clas : 3000 LBS, 6000 LBS, 9000 LBS

Manufacturer of : Forged Union, Threaded Union Fittings, Threaded Union Fittings, Socket Weld Union Fittings

Material :

Stainless Steel :

ASTM A182 F304, F304L, F306, F316L, F304H, F309S, F309H, F310S, F310H, F316Ti, F316H, F316LN, F317, F317L, F321, F321H, F11, F22, F91, F347, F347H, F904L, ASTM A312/A403 TP304, TP304L, TP316, TP316L

Duplex & Super Duplex Steel Threaded Union :

ASTM A182 – F51, F53, F55 S31803, S32205, S32550, S32750, S32760, S32950.

Carbon Steel Threaded Union :

ASTM/ ASME A 105, ASTM/ ASME A 350 LF 2, ASTM / ASME A 53 GR. A & B, ASTM A 106 GR. A, B & C. API 5L GR. B, API 5L X 42, X 46, X 52, X 60, X 65 & X 70. ASTM / ASME A 691 GR A, B & C

Alloy Steel :

ASTM / ASME A 182, ASTM / ASME A 335, ASTM / ASME A 234 GR P 1, P 5, P 9, P 11, P 12, P 22, P 23, P 91, ASTM / ASME A 691 GR 1 CR, 1 1/4 CR, 2 1/4 CR, 5 CR, 9CR, 91

Copper Alloy Steel :

ASTM / ASME SB 111 UNS NO. C 10100 , C 10200 , C 10300 , C 10800 , C 12000, C 12200, C 70600 C 71500, ASTM / ASME SB 466 UNS NO. C 70600 (CU -NI- 90/10) , C 71500 (CU -NI- 70/30)

Nickel Alloy :

ASTM SB564, SB564, Nickel 200 (UNS No. N02200), Nickel 201 (UNS No. N02201), Monel 400 (UNS No. N04400), Monel 500 (UNS No. N05500), Inconel 800 (UNS No. N08800), Inconel 825 (UNS No. N08825), Inconel 600 (UNS No. N06600), Inconel 625 (UNS No. N06625), Inconel 601 (UNS No. N06601), Hastelloy C 276 (UNS No. N10276), Alloy 20 (UNS No. N08020), Titanium (Grade 2 & 5)

HEX & SWAGE NIPPLE



Dimensions : ASME B16.11, MSS SP-79, MSS SP-95, 83, 95, 97, BS 3799

Size : 1/8" NB to 4" NB

Connection : Threaded

Thickness : Schedule 5S, 10S, 20S, S10, S20, S30, STD, 40S, S40, S60, XS, 80S, S80, S100, S120, S140, S160, XXS and etc.

Pressure Clas : 3000 LBS, 6000 LBS, 9000 LBS

Manufacturer of : Hex Nipple, Swage Nipple.

Material :

Stainless Steel :

ASTM A182 F304, F304L, F306, F316L, F304H, F309S, F309H, F310S, F310H, F316TI, F316H, F316LN, F317, F317L, F321, F321H, F11, F22, F91, F347, F347H, F904L, ASTM A312/A403 TP304, TP304L, TP316, TP316L

Duplex & Super Duplex Steel :

ASTM A182 – F51, F53, F55 S31803, S32205, S32550, S32750, S32760, S32950.

Carbon Steel :

ASTM/ ASME A 105, ASTM/ ASME A 350 LF 2, ASTM / ASME A 53 GR. A & B, ASTM A 106 GR. A, B & C. API 5L GR. B, API 5L X 42, X 46, X 52, X 60, X 65 & X 70. ASTM / ASME A 691 GR A, B & C

Alloy Steel :

ASTM / ASME A 182, ASTM / ASME A 335, ASTM / ASME A 234 GR P 1, P 5, P 9, P 11, P 12, P 22, P 23, P 91, ASTM / ASME A 691 GR 1 CR, 1 1/4 CR, 2 1/4 CR, 5 CR, 9CR, 91

Copper Alloy Steel :

ASTM / ASME SB 111 UNS NO. C 10100 , C 10200 , C 10300 , C 10800 , C 12000, C 12200, C 70600 C 71500, ASTM / ASME SB 466 UNS NO. C 70600 (CU -NI- 90/10) , C 71500 (CU -NI- 70/30)

Nickel Alloy :

ASTM SB564, SB564, Nickel 200 (UNS No. N02200), Nickel 201 (UNS No. N02201), Monel 400 (UNS No. N04400), Monel 500 (UNS No. N05500), Inconel 800 (UNS No. N08800), Inconel 825 (UNS No. N08825), Inconel 600 (UNS No. N06600), Inconel 625 (UNS No. N06625), Inconel 601 (UNS No. N06601), Hastelloy C 276 (UNS No. N10276), Alloy 20 (UNS No. N08020), Titanium (Grade 2 & 5)

STREET ELBOW



Dimensions : ASME B16.11, MSS SP-79, MSS SP-95, 83, 95, 97, BS 3799

Size : 1/8" NB to 4" NB

Connection : Threaded

Thickness : Schedule 5S, 10S, 20S, S10, S20, S30, STD, 40S, S40, S60, XS, 80S, S80, S100, S120, S140, S160, XXS and etc.

Pressure Clas : 3000 LBS, 6000 LBS, 9000 LBS

Manufacturer of : Street Elbow.

Material

Stainless Steel :

ASTM A182 F304, F304L, F306, F316L, F304H, F309S, F309H, F310S, F310H, F316TI, F316H, F316LN, F317, F317L, F321, F321H, F11, F22, F91, F347, F347H, F904L, ASTM A312/A403 TP304, TP304L, TP316, TP316L

Duplex & Super Duplex Steel :

ASTM A182 – F51, F53, F55 S31803, S32205, S32550, S32750, S32760, S32950.

Carbon Steel :

ASTM/ ASME A 105, ASTM/ ASME A 350 LF 2, ASTM / ASME A 53 GR. A & B, ASTM A 106 GR. A, B & C. API 5L GR. B, API 5L X 42, X 46, X 52, X 60, X 65 & X 70. ASTM / ASME A 691 GR A, B & C

Alloy Steel :

ASTM / ASME A 182, ASTM / ASME A 335, ASTM / ASME A 234 GR P 1, P 5, P 9, P 11, P 12, P 22, P 23, P 91, ASTM / ASME A 691 GR 1 CR, 1 1/4 CR, 2 1/4 CR, 5 CR, 9CR, 91

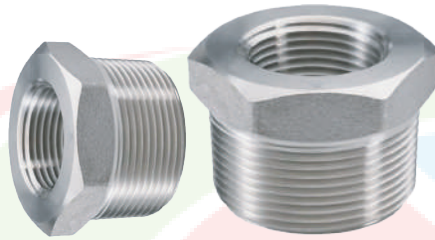
Copper Alloy Steel :

ASTM / ASME SB 111 UNS NO. C 10100 , C 10200 , C 10300 , C 10800 , C 12000, C 12200, C 70600 C 71500, ASTM / ASME SB 466 UNS NO. C 70600 (CU -NI- 90/10) , C 71500 (CU -NI- 70/30)

Nickel Alloy :

ASTM SB564, SB564, Nickel 200 (UNS No. N02200), Nickel 201 (UNS No. N02201), Monel 400 (UNS No. N04400), Monel 500 (UNS No. N05500), Inconel 800 (UNS No. N08800), Inconel 825 (UNS No. N08825), Inconel 600 (UNS No. N06600), Inconel 625 (UNS No. N06625), Inconel 601 (UNS No. N06601), Hastelloy C 276 (UNS No. N10276), Alloy 20 (UNS No. N08020), Titanium (Grade 2 & 5)

BUSHING



Dimensions : ASME B16.11, MSS SP-79, MSS SP-95, 83, 95, 97, BS 3799
Size : 1/8" NB to 4" NB

Connection : Threaded

Thickness : Schedule 5S, 10S, 20S, S10, S20, S30, STD, 40S, S40, S60, XS, 80S, S80, S100, S120, S140, S160, XXS and etc.

Pressure Clas : 3000 LBS, 6000 LBS, 9000 LBS

Manufacturer of : Bushings, Hex Head Bushing.

Material :

Stainless Steel :

ASTM A182 F304, F304L, F306, F316L, F304H, F309S, F309H, F310S, F310H, F316TI, F316H, F316LN, F317, F317L, F321, F321H, F11, F22, F91, F347, F347H, F904L, ASTM A312/A403 TP304, TP304L, TP316, TP316L

Duplex & Super Duplex Steel :

ASTM A182 – F51, F53, F55 S31803, S32205, S32550, S32750, S32760, S32950.

Carbon Steel :

ASTM/ ASME A 105, ASTM/ ASME A 350 LF 2, ASTM / ASME A 53 GR. A & B, ASTM A 106 GR. A, B & C. API 5L GR. B, API 5L X 42, X 46, X 52, X 60, X 65 & X 70. ASTM / ASME A 691 GR A, B & C

Alloy Steel :

ASTM / ASME A 182, ASTM / ASME A 335, ASTM / ASME A 234 GR P 1, P 5, P 9, P 11, P 12, P 22, P 23, P 91, ASTM / ASME A 691 GR 1 CR, 1 1/4 CR, 2 1/4 CR, 5 CR, 9CR, 91

Copper Alloy Steel :

ASTM / ASME SB 111 UNS NO. C 10100 , C 10200 , C 10300 , C 10800 , C 12000, C 12200, C 70600 C 71500, ASTM / ASME SB 466 UNS NO. C 70600 (CU -NI- 90/10) , C 71500 (CU -NI- 70/30)

Nickel Alloy :

ASTM SB564, SB564, Nickel 200 (UNS No. N02200), Nickel 201 (UNS No. N02201), Monel 400 (UNS No. N04400), Monel 500 (UNS No. N05500), Inconel 800 (UNS No. N08800), Inconel 825 (UNS No. N08825), Inconel 600 (UNS No. N06600), Inconel 625 (UNS No. N06625), Inconel 601 (UNS No. N06601), Hastelloy C 276 (UNS No. N10276), Alloy 20 (UNS No. N08020), Titanium (Grade 2 & 5)

ALLOY STEEL SA 182



Standard : ASTM A182 Alloy Steel, UNS K41545, WERKSTOFF NR. 1.7362, 5Cr-1/2Mo

Grade : A182 F5, F9, F11, F12, F22, F91

Size: 4MM – 350 MM

Length : 1M - 6M

DUPLEX UNS S31803



Standard : ASTM A276 / ASME SA276

Grade : UNS S31803, WERKSTOFF NR. 14462

Size : 10 MM - 100 MM.

Length : 3M - 6M

EN353 ALLOY STEEL



Standard : ASTM B 473, ASME SB 473

Size: 5MM - 500MM

Length : 1M - 6M



S235JR CARBON STEEL



Standard : S235JR

Size: 22 MM – 800 MM

THICKNESS : 25 MM – 50 MM

LENGTH : 3M - 6M



CARBON STEEL 1018



STANDARD : AISI 1018, AISI S1018

SIZE: 3 MM – 300 MM

THICKNESS : 3 MM – 75 MM

LENGTH : 6M – 12 M



ROUND BAR ASTM A105



STANDARD : ASTM A105 / ASME SA105

SIZE: 3 MM – 300 MM

THICKNESS : 3 MM – 75 MM

LENGTH : 6M – 12 M

CARBON STEEL ASTM A36



Standard : ASTM A36, ASME SB36M

Material : EN Fe360D2, S235J2G4, USA A36, GB Q235D, BS 40EE, JIS SM 400 A, ISO Fe 360B, IS IS 226

Out Diameter : 3MM - 300MM

Thickness : 3MM - 75MM

Length : 6M -12M

CARBON STEEL ASTM A516 GRADE 70



Standard : ASTM A276 / ASME SA276

Grade : UNS S31803, WERKSTOFF NR. 14462

Size : 10 MM - 100 MM.

Length : 3M - 6M

CARBON STEEL S235GRG2C



Standard : S235GRG2C

Size: 22 MM – 800 MM

Thickness : 25 MM – 50 MM

Length : 3M - 6M



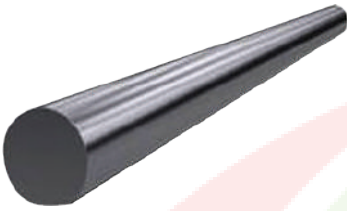
CARBON STEEL S235JRG2C

Standard : S235JRG2C

Size : 22 MM – 800 MM

Thickness : 25 MM – 50 MM

Length : 3M - 6M



CARBON STEEL S355J2+N

Standard : S355J2+N

Size: 2 MM – 800 MM

Thickness : 25 MM – 50 MM

Length : 3M - 6M



CARBON STEEL ST 52

Standard : ST 52 1.0580

Size : 22 MM – 800 MM

Thickness : 20MM – 330M MM

Length : 3M - 18M





304 HOLLOW BAR


Standard : ASTM A276 / ASME SA 276

Grade : WERKSTOFF NR. 1.4301, UNS S30400, JIS SUS 304, BS 304S31, GOST 08X18H10, AFNOR Z7CN18-09, EN X5CRNI18-10

Out Diameter : 16MM - 119MM

Thickness : 0.25MM - 3MM

Length : 3M - 6M




SUPER DUPLEX UNS S32750

Standard : ASTM A276 / ASME SA276

Grade : UNS 32750, WERKSTOFF NR. 14410

Size : 10 MM - 100 MM.

Length : 3M - 6M




SUPER DUPLEX UNS S32760

Standard : ASTM A276 / ASME SA276 , API

Grade : UNS 32760, WERKSTOFF NR. 14410

Size : 10 MM - 100 MM.

Length : 3M - 6M



316L HOLLOW BAR

Standard : ASTM A276 / ASME SA 276

Grade : WERKSTOFF NR. 1.4404 / 1.4435, UNS S31603, JIS SUS 316L, BS 316S11 / 316S13, GOST 03Ch17N14M3 / 03Ch17N14M2, AFNOR Z3CND17-11-02 / Z3CND18-14-03, EN X2CrNiMo17-12-2 / X2CrNiMo18-14-3

Out Diameter : 16MM - 119MM

Thickness : 0.25MM - 3MM

Length : 3M - 6M



STAINLESS STEEL 431 BAR

Standard : ASTM A276 / ASME SA 276

Grade : STAINLESS STEEL 431 / UNS S43100

SS 431 ROUND BAR SIZE : OUTSIDE DIAMETER 4MM - 500MM

SS 431 BRIGHT BAR SIZE : OUTSIDE DIAMETER 4MM - 100MM

SS 431 HEX BAR SIZE : 18MM – 57MM (11/16" TO 2-3/4")

SS 431 SQUARE BAR SIZE : 18MM – 47MM (11/16" TO 1-3/4")

Length : 3M - 6M



STUD BOLT AND NUT ASTM A320 GRADE L7 A194 GR 4



Size : 1/2" to 24"

Dimensions : ASME 16.11, MSS SP-79, 83, 95, 97, BS 3799

Pressure Class : 3000 LBS, 6000 LBS, 9000 LBS (Sch40, Sch80/Xs Sch160 Xxs)

Connect Type : Welded, threaded, BW, SW

STUD BOLT ASTM A320 GRADE B8 AND NUT A194 GRADE 8



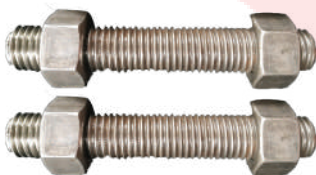
Size : 1/2" to 24"

Dimensions : ASME 16.11, MSS SP-79, 83, 95, 97, BS 3799

Pressure Class : 3000 LBS, 6000 LBS, 9000 LBS (Sch40, Sch80/Xs Sch160 Xxs)

Connect Type : Welded, threaded, BW, SW

STUD BOLT AND NUT A193 GRADE B7 A194 2H CADMIUM PLATED



Size 1/2" to 24"

Dimensions : ASME 16.11, MSS SP-79, 83, 95, 97, BS 3799

Pressure Class : 3000 LBS, 6000 LBS, 9000 LBS (Sch40, Sch80/Xs Sch160 Xxs)

Connect Type : Welded, threaded, BW, SW

HEXAGONAL SOCKET FLAT COUNTERSUNK CAP SCREW GRADE 12.9



Size : 1/2" to 24"

Dimensions : ASME 16.11, MSS SP-79, 83, 95, 97, BS 3799

Pressure Class : 3000 LBS, 6000 LBS, 9000 LBS (Sch40,
Sch80/Xs Sch160 Xxs)

Connect Type : Welded, threaded, BW, SW

STUD BOLT AND 2 HEX NUT A193 GRADE B7 A194 2H HOT DIP GALVANIS



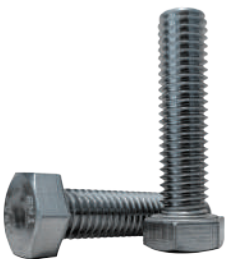
Size : 1/2" to 24"

Dimensions : ASME 16.11, MSS SP-79, 83, 95, 97, BS 3799

Pressure Class : 3000 LBS, 6000 LBS, 9000 LBS (Sch40,
Sch80/Xs Sch160 Xxs)

Connect Type : Welded, threaded, BW, SW

HEXAGONAL BOLT ONLY SS304 (UNC)

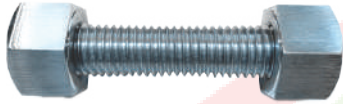


SIZE (INCH) : 1/4"UNC - 1" 8UNC

LENGTH : 1/2" - 12"

MANUFACTURED : LOKAL, CHINA

STUD BOLT AND NUT A193 GRADE B8 A194 GRADE 8 SS304



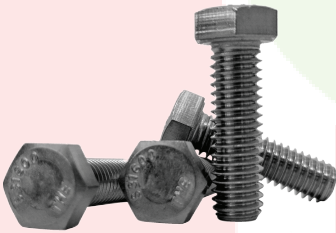
SPECIFICATIONS : ASTM A193 / ASME SA193

SIZE : 1/2"- 1"

LENGHT : 2"-15"

MANUFACTURED : LOKAL, AMERIKA, JAPAN, INDIA, CHINA,
EROPA

HEXAGONAL BOLT ONLY SS316 (UNC)



SIZE (INCH) : 1/4"UNC - 1" 8UNC

LENGTH : 1/2" - 12"

MANUFACTURED : LOKAL, CHINA

STUD BOLT AND NUT A193 GRADE B7 A194 2H CADMIUM PLATED



Size : 1/2" to 24"

SPECIFICATIONS : ASTM A193 / ASME SA193

SIZE : 3/6 INCH - 2 INCH

LENGHT : 3MM - 1000MM - 2000MM - 3000MM

MANUFACTURED : LOKAL, AMERIKA, JAPAN, INDIA, CHINA,
EROPA